



athertons
property & land

athertons
property & land tel. 01254 828810

www.athertons-uk.com

26 Dale View, Billington, Ribble Valley BB7 4TE
£259,950



A superbly presented semi-detached chalet-style bungalow, built to a high standard by DH Homes in 2018. Designed to offer flexible living accommodation, the property benefits from a ground floor bedroom and house bathroom, together with a first floor principal bedroom with en-suite facilities. Wide French doors open onto a beautifully landscaped terrace garden with Indian stone paving and timber decking, set beneath an eye-catching planted rockery. Occupying a pleasant cul-de-sac position, the property also includes dedicated parking for two vehicles.

Enjoying a pleasant position within a small cul-de-sac, this attractive home offers easy walking access to the charming village of Whalley via the nearby river footbridge. A spacious entrance porch welcomes you into the property. The entrance hall provides access to the ground-floor accommodation and features an attractive staircase rising to the first floor. Throughout the home, oak-veneered doors with brushed metal handles and matching brushed metal switch and socket plates add a touch of quality and style. A useful understairs cupboard, fitted with open shelving, provides excellent storage.

The heart of the home is the impressive open-plan living area. French doors span the rear elevation, opening directly onto the patio and garden, creating a bright and sociable living space. A full-width bespoke media wall incorporates extensive storage, adjustable shelving, and integrated bottle storage. The room comfortably accommodates both lounge and dining furniture. The kitchen is fitted with attractive Shaker-style cabinetry complemented by granite-effect worktops, matching upstands, and a composite sink with swan-neck mixer tap. Integrated appliances include a Bosch electric oven, Neff induction hob with extractor, Siemens washing machine, slimline dishwasher, and fridge/freezer.

Also situated on the ground floor is a double bedroom and a stylish three-piece bathroom. The bathroom includes a low-level WC, vanity wash basin with monobloc mixer tap, and a Triton electric shower with glass screen. Easy-clean wall panelling surrounds the shower area, while half-tiled walls and a tiled floor complete the contemporary finish.

The en-suite shower room features a quadrant shower enclosure with thermostatic shower, including both rainfall and handheld attachments, alongside a low-level WC and vanity wash basin with monobloc mixer tap. The room is finished with tiling to the shower area, half-height wall tiling elsewhere.

To the front of the property is a neat pebbled forecourt with a stone-flagged pathway leading to the entrance door. A shared stone-flagged pathway provides access to the rear garden, which is arranged over three attractive terrace levels connected by timber steps.

The upper terrace features a decked seating and dining area, while the second level is pebbled and incorporates a timber garden shed and beautifully planted vertical rockery. The lower terrace enjoys a stone-flagged patio and timber storage locker, creating an attractive and practical outdoor space.

Adjacent to No. 27 are two private tandem parking spaces.

Additional Features

The home is well appointed with PVCu double-glazed windows and external doors, quality oak internal doors, LED downlighting, quality floor coverings, a security alarm system, and an external cold-water tap

Services

All mains services are connected.

Tenure

We understand from the vendors to be Freehold

Energy Performance Rating

EPC rating B

Council Tax

RVBC C

Viewings

Strictly by appointment only.

Office Hours

53 King Street, Whalley, BB7 9SP
Monday to Friday - 9.00am to 5.00pm
Saturday - 9.30am to 1.30pm

01254 828810

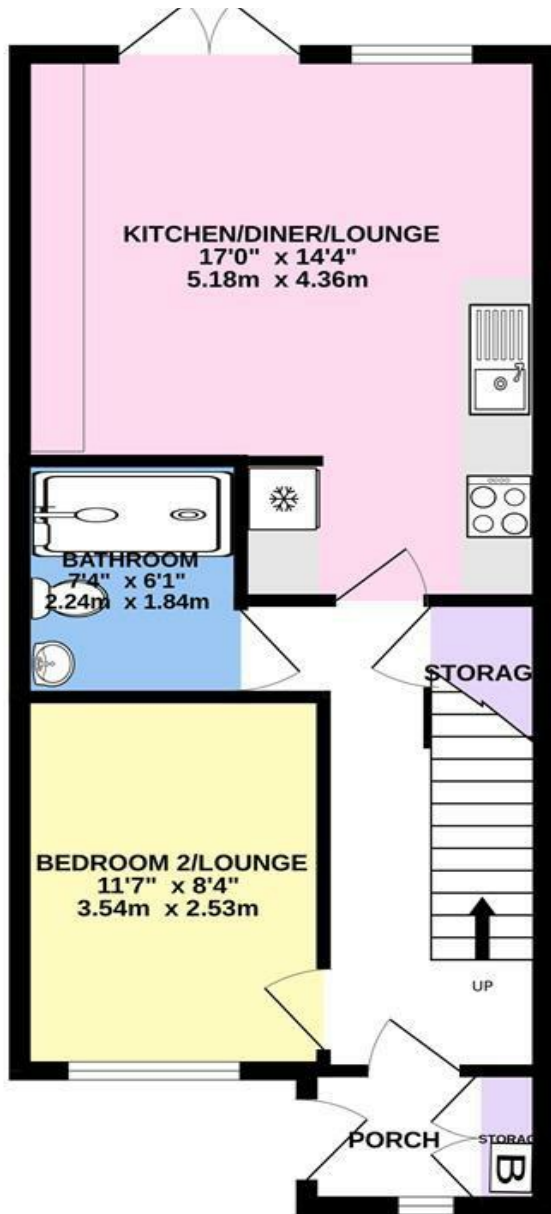
Disclaimer

Athertons Property & Land provide these particulars as a general guide and does not guarantee their accuracy. They do not constitute an offer, contract, or warranty. While reasonable efforts have been made to ensure the information is correct, buyers or tenants must independently verify all details through inspections, surveys, and enquiries. Statements are not representations of fact, and no warranties or guarantees are provided by Athertons Property & Land, its employees, or agents.

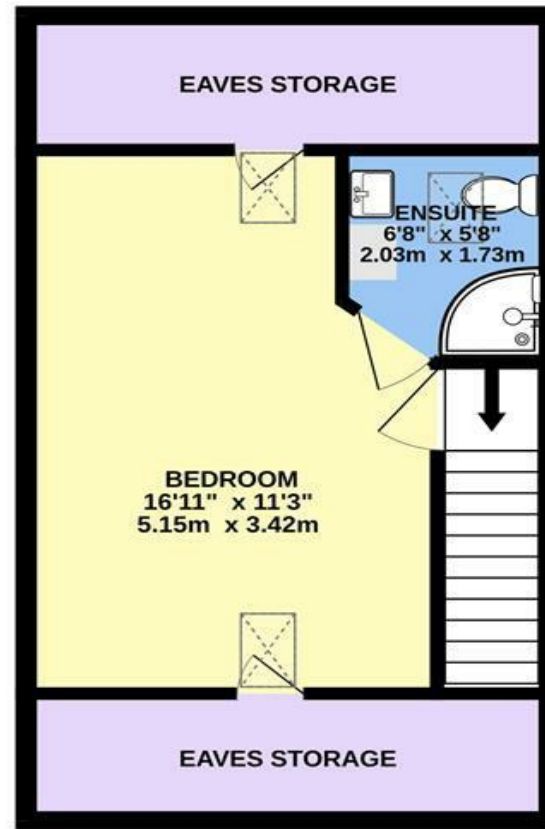
Photographs depict parts of the property as they were when taken and may not reflect current conditions. Measurements, distances, and areas are approximate and should not be relied upon. References to alterations or uses do not confirm that necessary planning, building regulations, or other permissions have been obtained. Any assumptions about the property's condition or suitability should be independently verified.







1ST FLOOR
235 sq.ft. (21.8 sq.m.) approx.



26 DALE VIEW, BILLINGTON, BB7 9LL

TOTAL FLOOR AREA : 713 sq.ft. (66.2 sq.m.) approx.

Whilst every attempt has been made to ensure the accuracy of the floorplan contained here, measurements of doors, windows, rooms and any other items are approximate and no responsibility is taken for any error, omission or mis-statement. This plan is for illustrative purposes only and should be used as such by any prospective purchaser. The services, systems and appliances shown have not been tested and no guarantee as to their operability or efficiency can be given.
Made with Metropix ©2024





